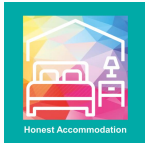


Welcome to  
**City Centre Style One**



**Honest Accommodation**

*Enjoy Luxury*

Welcome to the Property

## **Welcome to City Centre Style One**

**We do hope that you enjoy your stay here**

We have tried to provide all the basic provisions that you might need to facilitate a comfortable stay such as tea, coffee, biscuits, washing up liquid, laundry detergent, toiletries etc.

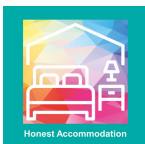
You are very welcome to use and enjoy these as you have need but we do ask that you respect the next guests and leave behind any unused so that they may similarly enjoy their stay.

If you need to contact us by telephone, our daytime number is 023 8076 9736. In emergencies, we are available out-of-hours on 07963 773 716.

It is worth being aware of the front door lock's opening system. To unlock the door:

1. Place your hand over the number pad and wait until the light comes on.
2. Enter in the number code you have been sent prior to your arrival, on the number pad, followed by the star (\*) button.
3. Turn the thumbturn clockwise to open the door.





# Honest Accommodation

Enjoy Luxury

## Address

15 Maddison Street  
Southampton, SO14 2BN

## Parking

There is paid parking available near the property, but none designated for 15 Maddison Street.

## Internet/Wifi

Free high-speed internet is provided with the property. The router is located in the living room cupboard opposite the bathroom, with the router name and password found written on the device.

## Cooking & Dining

City Centre Style One contains cooking facilities, including an oven, a microwave, refrigerator, kettle, and a gas hob. There is space within the property designated

for dining, which you are more than welcome to use.

## Cleaning

City Centre Style One comes equipped with high-quality cleaning facilities. A dishwasher is available after cooking, whilst a washing machine and tumble dryer are available for clothing. An iron is provided for guests to use if needed.

The property is visited regularly by a cleaner to ensure the property is kept to a high standard. Extra cleaning products are also available if needed.

## Bathing

City Centre Style One contains full bathing facilities for all guests to enjoy. Towels are supplied, as are toiletries, and spare toilet paper.

For drying, hairdryers are available.

## Property Information

## Other Facilities

Other facilities at the property include:

- A courtyard area for guests to enjoy
- A laundry service is provided optionally.

## Fire Safety

For your safety, the property has been equipped with fire-safety precautions.

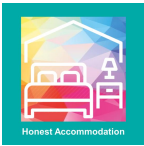
The **FIRE ESCAPE ROUTE** is via the front door of the property. If this obstructed, head to the centre courtyard.

Self-closing fire doors, alongside inter-connected smoke alarms, have been installed. A **FIRE BLANKET** is available in the kitchen.

## Emergency Contact

If an emergency occurs within the property, please let us know **immediately**.

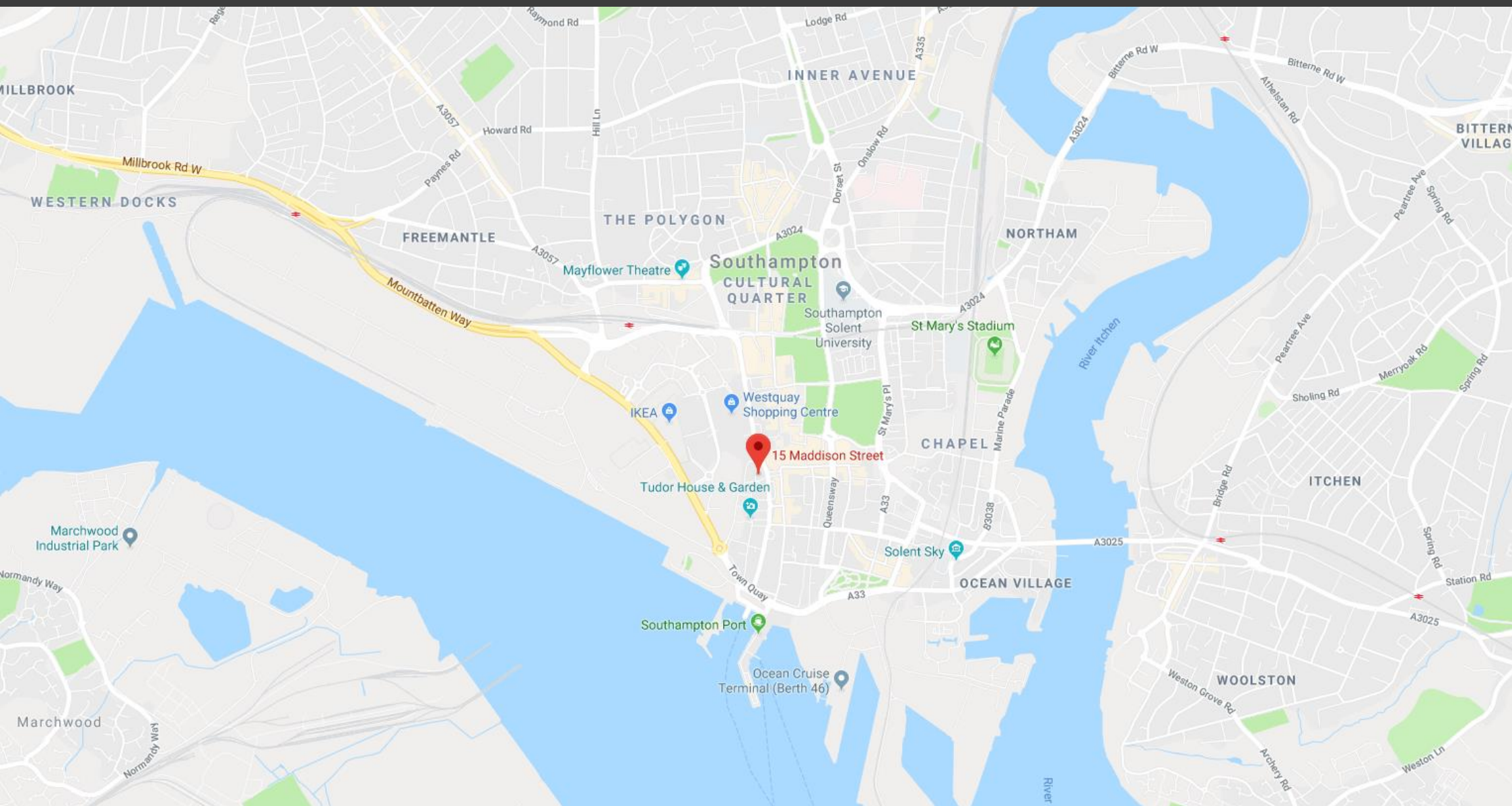
We are reachable by telephone on **07963 773 716** for **emergencies only**.



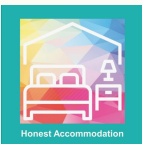
# Honest Accommodation

Enjoy Luxury

Area Map







## Honest Accommodation

Enjoy Luxury

### Hob

Please be aware that this is an **electric hob** and the full surface area may be hot during and after use. Do not touch or place items on the hob until it has cooled down sufficiently.

To use the hob turn the relevant hotplate control knob clockwise to the required heat setting:

0 = OFF

1 = Minimum

4 = Medium

6 = Maximum

The control light to the left of the control knobs will be red when a hotplate is switched on.

Please note the two hotplates closest to control knobs will heat up the fastest.

### Oven

To switch the oven on, turn the control knob (located on the right of the oven) to the appropriate oven function. Then turn the temperature control knob (located on the left of the oven) to the desired temperature.

To turn off the oven switch both knobs to the OFF position.

Oven function	
	Off position
	Conventional Cooking
	Bottom Heat
	Top Heat
	Grilling
	Fast Grilling

### Microwave

To use the microwave press the Power button and turn the Timer/Weight/Auto dial to the selected power setting. For reference:

P100 = Full Power

P10 = 10% Power

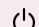
.Then press the Start/+30Sec/Confirm button.

Next, use the Timer/Weight/Auto dial to set the cooking time desired. Finally, press Start/+30Sec/Confirm to begin cooking.

### Washing Machine

To use the washing machine press the ON/OFF button and wait for the START/PAUSE light to pulse. Load the laundry and close door then set the wash cycle knob to wash cycle 2 (standard 60°C cycle). Adjust wash temperature if desired. Add detergent to dispenser drawer. Press the START/PAUSE button to start.

### Television

To turn on the television press the  button on the television remote. This also activates standby mode if pressed again. Use the number keys to enter channel numbers or press the SOURCE button to change between television and HDMI-connected sources.

Use the V+ and V- keys to alter volume up or down.

Use P+ and P- to change channel up or down. You are also able to press the NETFLIX button to view and sign into an existing Netflix account if you have one.

## User Instructions

### WiFi

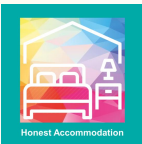
Complementary WiFi is available for all guests on unlimited devices.

To find the username and password please consult the router which is located in the living room cupboard, opposite the bathroom.

### Report Issues

If any feature of the property is not up to standard, or you wish to report an issue with any of the stock appliances, please let us know.

We are reachable by telephone on **02380 769 736** 9am – 5.30pm, Mon – Fri Or on **07963 773 716** for **emergencies**.

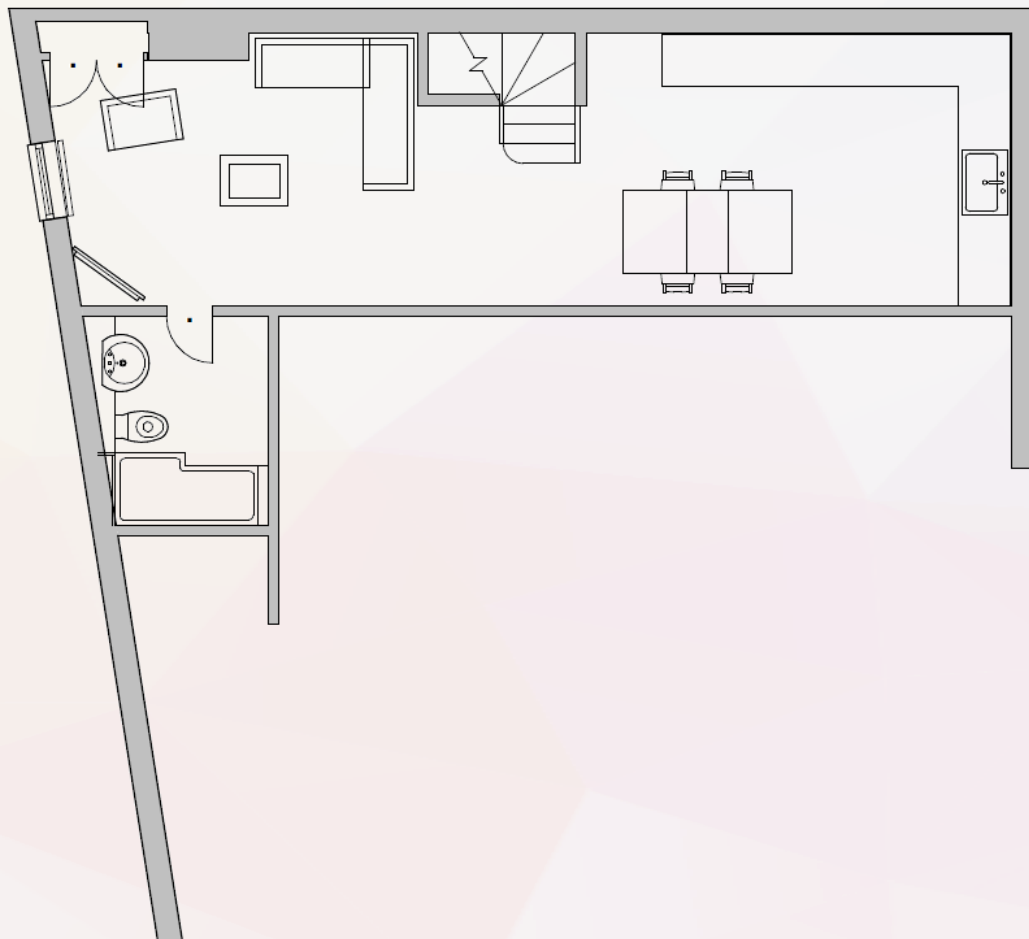


Honest Accommodation

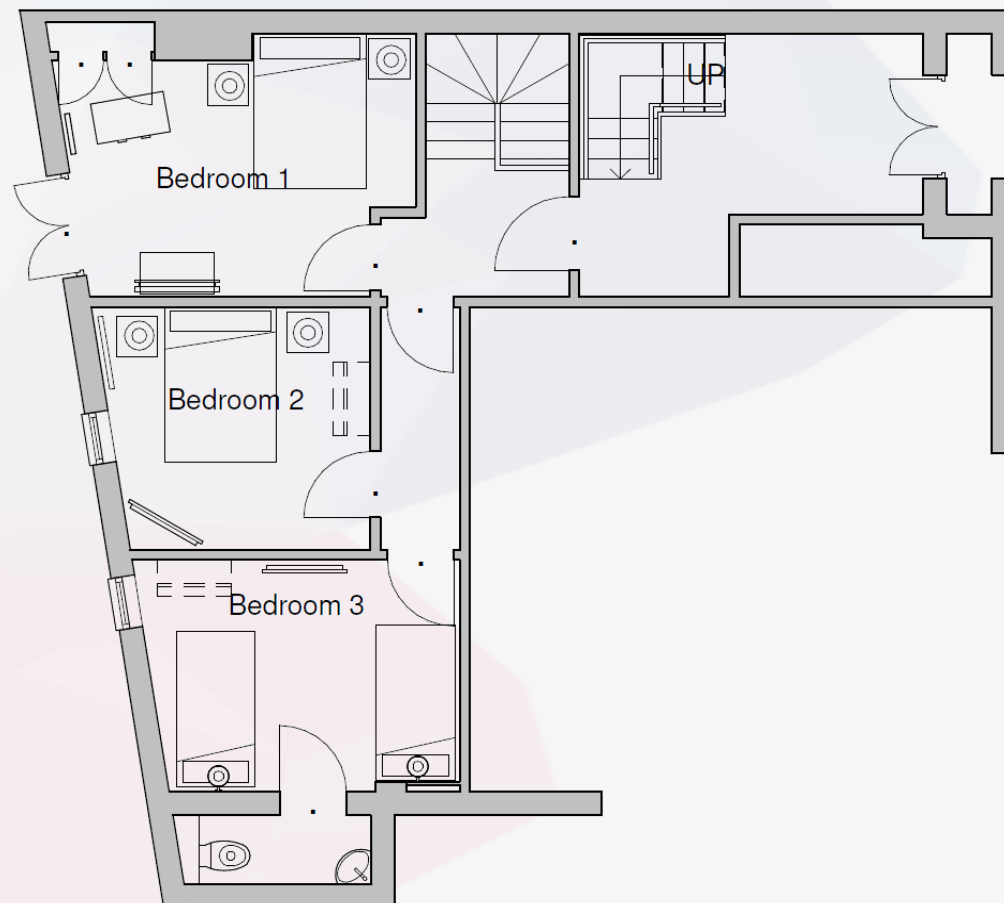
Enjoy Luxury

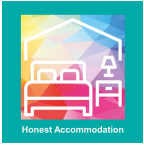
Floor Plans

## Basement



## Ground Floor





## House Rules

During your stay, there are the following house rules to be aware of. These rules are implemented with the safety of our guests, and the security of the property in mind. We kindly ask that you obey the following rules during your stay with us:

### No Smoking

In all areas of the property smoking is strictly forbidden. Prior to booking we notify guests of this policy. Via signs throughout the accommodation we also remind you of this

If you do smoke, please at all times use facilities outside of the building

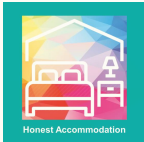
If you ignore this policy and are found to be smoking or have smoked within the property, a fine of £150.00 will be applied to your account. If we discover further evidence of smoking you may be refused custom and asked to leave

This policy is not intended to stop people smoking but for the sake of other people to regulate where it occurs

### Not Suitable for Pets

Pets are not permitted at any time

It is a disciplinary offence to have a pet within the premises and as such will be considered a breach of contract, possibly resulting in a fine



Honest Accommodation

*Enjoy Luxury*

## House Rules

### No Parties, especially stag/hen gatherings

Since the accommodation is in a residential area, the policy is in place to appropriately respect our neighbours

In this property parties, stag or hen gatherings are strictly prohibited

We notify our guests of this policy prior to booking so you have opportunity to book elsewhere, if you wish to conduct this type of function

### No Illegal Activities

Illegal activities of any sort will not be tolerated. If detected or suspected on the premises, statutory authorities will promptly be notified

This policy is in place to protect all parties and to be respectful of our residential area neighbours

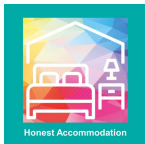
### No Extra Guests

Breaching occupancy limits is taken seriously

To avoid fines, or even being asked to vacate the property, do not allow extra unnamed guests to stay in the premises

Booking terms make clear that customers must not exceed the occupancy limit or change confirmed bookings. If you do so, owners are entitled to take back possession of the property





### No Under 25s unless Accompanied by an Adult

Individuals below the age of 25 are unable to book accommodation and are not permitted to stay in the property, unless accompanied by an >25.

Please be aware that this policy is enforced to ensure the safety of our guests.

### Security Deposit £250

Prior to booking, guests will be required to pay a security deposit of £250.00, in respect of which they will be provided a security deposit receipt.

Post guest departure, once the property has been cleaned and inspected, guests' security deposits will be returned minus any requisite deductions required in respect of damage or items missing from the property.

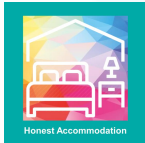
Within 3 days of departure guest deposits will normally have been returned to guest accounts.

### Leave the Space Clean and Tidy

We politely request that you leave the property as you found it when you arrived.

You are liable for any damage caused to the property by you or persons with you during your stay.

We reserve the right to use your pre-paid deposit funds to compensate for or make good any loss, damage, costs or expenses incurred or suffered as a result of the aforementioned.



### Check In/Out Times

#### sCheck-in

Unless by prior arrangement earlier, please check-in after **15.00**. Booked rooms will be held for check-in until 09.00 the following day, after which they will be deemed cancelled.

No refunds will be provided for cancelled bookings.

#### Check-out

Unless by prior arrangement later, please check-out by **11.00**.

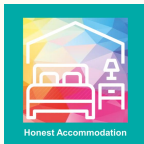
If you check-out beyond the stipulated time we reserve the right, without further notice, to charge you for an additional one night's stay at the then prevailing room rate or to remove your belongings to a safe place, denying you further access to accommodation.

### Cancellations

Refundable up to 14 days. Confirmed bookings non-refundable.

Other than change of guest name, no bookings can be amended, modified or cancelled.

Any booking cancellation or failure to arrive on the scheduled check-in date will be treated as a no-show resulting, under booking confirmation, in non-refundable total payment (including any add-on charges, together with all applicable tax payable).



**Honest Accommodation**

*Enjoy Luxury*

## House Rules

### Parking

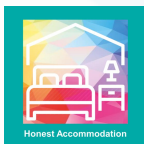
Parking is available at the property.

Prior to arrival, guests will be informed of all applicable parking instructions. To facilitate this please provide us with your mobile # / email address.

### Self-Check In/Electronic Lock System

Prior to your stay, guests will be informed of the property address and details of how to access the building.

You will be able to let yourself in and out of the accommodation using the electronic lock system located on the front door. Prior to your arrival the requisite code will be sent to you.



# Honest Accommodation

Enjoy Luxury

## Shopping

Southampton is a perfect place to shop. Serviced by two large shopping centres: West Quay, and the Marlands, as well as a bustling high-street, you have options all around you!

## Food

Dotted all over Southampton are eateries worth visiting. West Quay and the Watermark offer well-known chains, whilst Oxford Street and the High-Street offer hidden gems exclusive to Southampton. Want to dine by the water? then visit Ocean Village, where you can eat by the docks, for a uniquely Southampton experience.



## History & Docks

History surrounds the city. From the Sea City and Solent Sky museums, the Norman-era Bargate and City Walls, the famous docks that hosted the Titanic, and the industrious Spitfire factories north of the City. For history buffs, this is a key city to visit.

## Sport

Southampton FC needed a mention. The successful Premier League team calls St. Marys Stadium home. Just 15 minutes from the city, the stadium is a spectacle. The Ageas Bowl, home of the Hampshire County Cricket Club, is just outside of the city.

## Music, Entertainment & Arts

Mayflower Theatre remains a huge part of Southampton arts and culture, whilst famous venues The Joiners, the Guildhall, and the Concorde Club provide musical entertainment. Wanting something for the kids? Paultons Park featuring Peppa Pig is only 30 minutes from the centre!

## Local Attractions

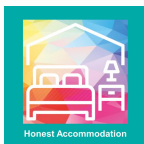
## Surrounding Area

Southampton is surrounded in all directions by things to do. A quick trip across the Solent on the Red Funnel, and you can visit the Isle of Wight. Perfect for those seeking a more unusual day out.

Prefer to stay on the mainland? Head north of the city on the M3 and you can visit historic Winchester, and depending on the season, the famous Christmas market.

Head west of the city on the M27 to visit the New Forest, perfect for walks and exploring traditional English countryside!

Going the other way? Follow the M27 east and you will find Portsmouth, another gem on the South-coast, right on your doorstep. The Portsmouth Historic Dockyard, featuring HMS Victory, is definitely worth stopping for.



## Honest Accommodation

*Enjoy Luxury*

If you want to get in touch with us at Honest Accommodation, you are more than welcome to. We would love to hear your feedback, and assist with any queries you may have.

### Our Address

158 Bassett Avenue, Southampton, SO16 7FD

### Email

[hello@honestaccommodation.org](mailto:hello@honestaccommodation.org)

### Web

[www.honestaccommodation.org](http://www.honestaccommodation.org)

### Phone

(+44) 023 8076 9736

## Honest Accommodation Contact Information

### Social Media

We have a number of webpages available that you can follow us on:



[twitter.com/HonestAccommo](https://twitter.com/HonestAccommo)



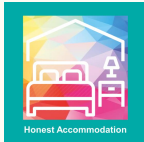
[facebook.com/honestaccommodation](https://facebook.com/honestaccommodation)



[linkedin.com/company/honestaccommodation](https://linkedin.com/company/honestaccommodation)







Honest Accommodation

*Enjoy Luxury*

Return Bookings

## Enjoyed your stay? Book again and save!

We are always happy to see returning guests, and if you want to book ahead through us, you can **save money**. We

Simply visit our website at [www.honestaccommodation.org](http://www.honestaccommodation.org), or send us an email at [hello@honestaccommodation.org](mailto:hello@honestaccommodation.org).

Want to Keep in Touch and Up to Date? Join our mailing list, available on our website.

